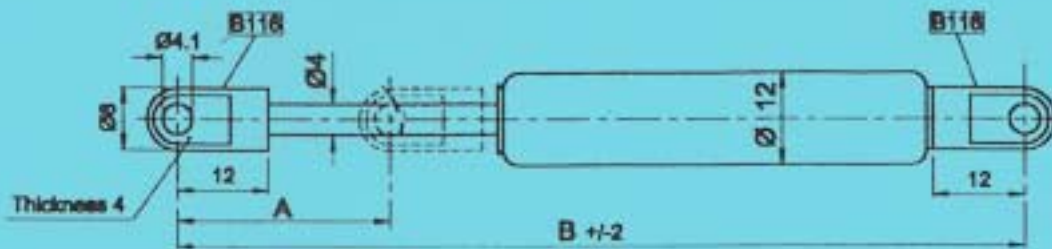


FORCE 10N - 180N

MINIATURE

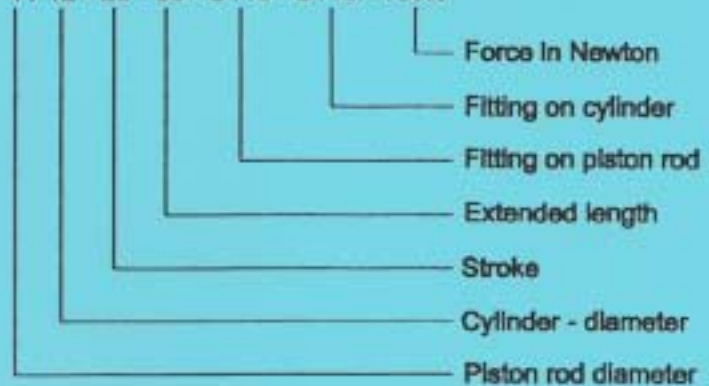


ORDER - EXAMPLE

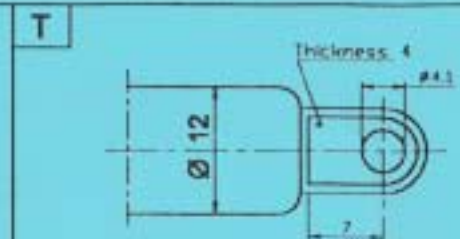
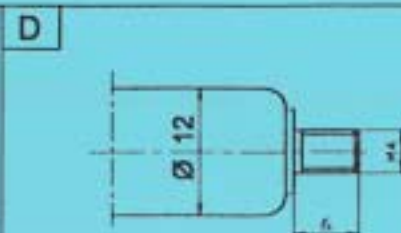
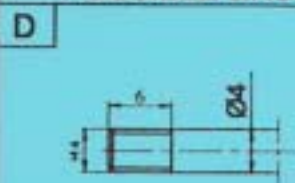
STANDART	
A	B
20	90
30	110
40	130
50	150
60	170
80	210
100	250
120	290
150	350

Special length on request

4 / 12 - 20 - 90 - B116 - B116 - 100N

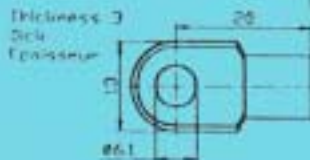
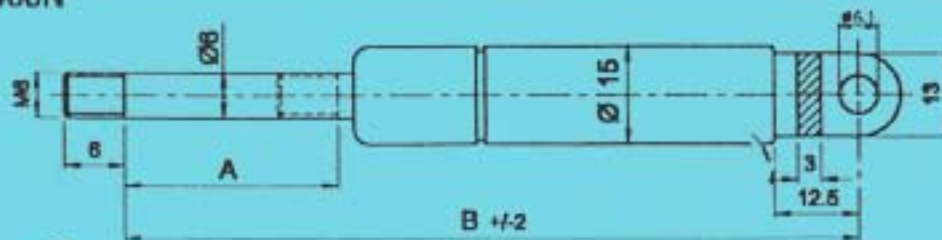


POSSIBLE ENDS

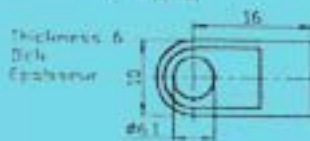


Dimensions in mm - We reserve the right to take modifications

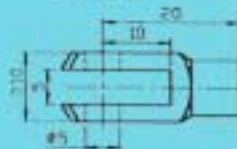
F1 50N - 400N



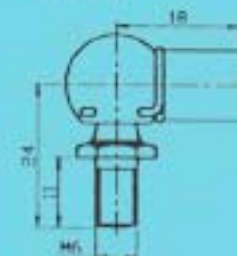
B15



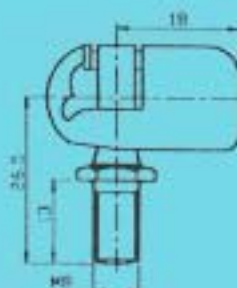
B118



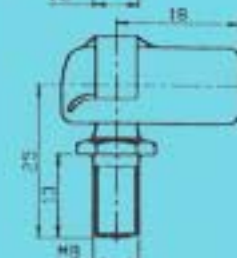
B16



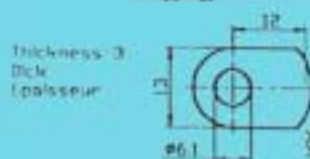
B18



B48



B52



B130

PROTECTION TUBE
SCHUTZROHR
TUBE DE PROTECTION **K**

STANDART			
A	B	F1(N)	Ref. No.
20	95	400	060100
40	135	400	061100
60	178	400	062100
80	213	400	063100
100	253	300	064100
120	295	300	065100
150	358	250	066100
180	420	250	067100
200	483	250	068100

Special length on request
Maßvarianten auf Anfrage
Longueur spéciale sur demande

Other fittings on request
Anschlußvarianten auf Anfrage
D'autres attache sur demande

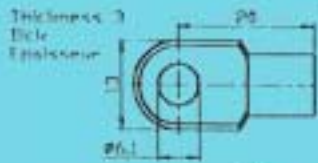
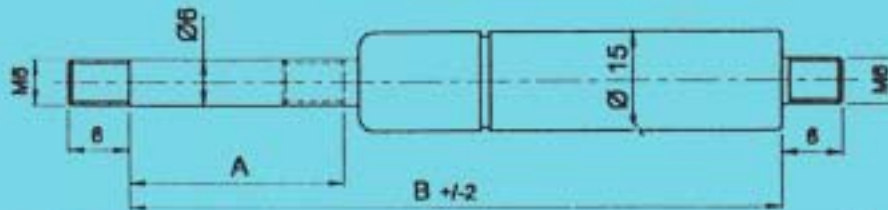
ORDERING EXAMPLE / BESTELL BEISPIEL / EXEMPLE DE COMMANDE

060100 / 0300N / B15 / K
 Ref. No. F1 Fielon rod end fitting Protection tube
 Kolbenstangen Anschluß Schutzrohr
 Attache côté tige Tube de protection

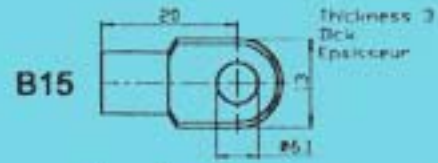
* F1 Values from 50 - 400N in steps of 25N. / F1 Werte von 50 - 400N gestuft in 25N schritten. / Valeurs F1 à choisir de 50 à 400N avec un pas de 25N.

Dimensions in mm - We reserve the right to take modifications

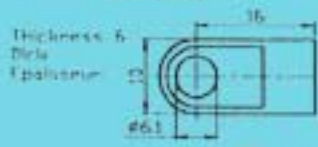
F1 50N - 400N



B15

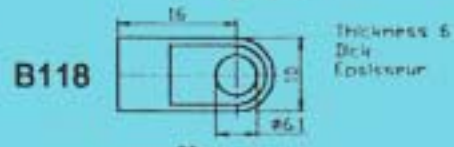


B15

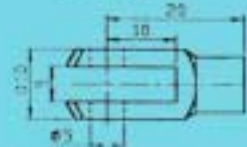


B118

PROTECTION TUBE
SCHUTZROHR
TUBE DE PROTECTION **K**

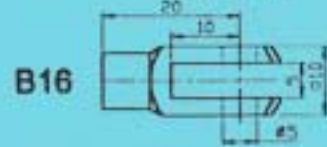


B118

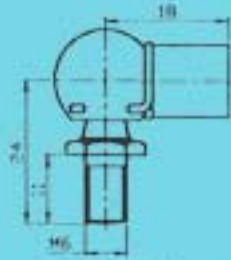


B16

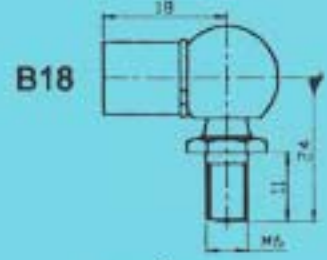
STANDART			
A	B	F1(N)	Ref. No.
20	80	400	060300
40	120	400	061300
60	160	400	062300
80	200	400	063300
100	240	300	064300
120	280	300	065300
150	340	250	066300
180	410	250	067300
200	450	250	068300



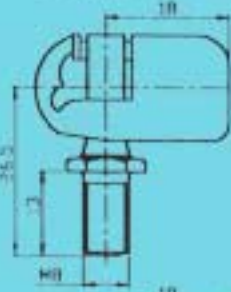
B16



B18

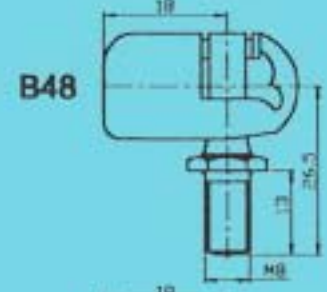


B18

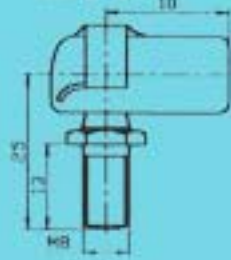


B48

Special length on request
Maßvarianten auf Anfrage
Longueur spéciale sur demande

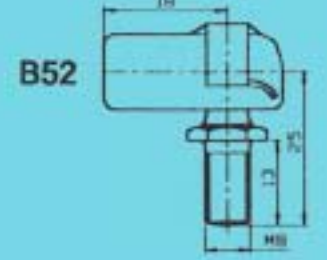


B48



B52

Other fittings on request
Anschlußvarianten auf Anfrage
D'autres attache sur demande



B52

ORDERING EXAMPLE / BESTELL BEISPIEL / EXEMPLE DE COMMANDE

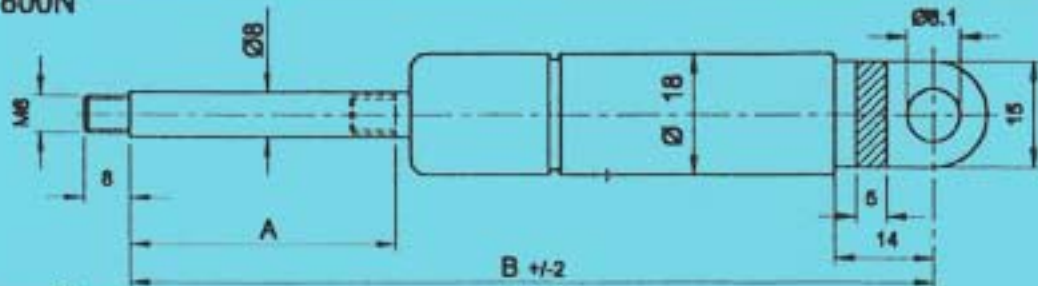
060300 / 0300N / B15 / B18 / K

Ref. No. F1 Platen rod end fitting Tube and fitting Protection tube
Kolbenstangen Anschluß Druckrohr Anschluß Schutzrohr
Attache côté tige Attache côté tube Tube de protection

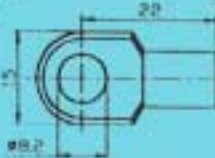
* F1 Values from 50 - 400N in steps of 25N. / F1 Werte von 50 - 400N gestaffelt in 25N schritten. / Valeurs F1 à choisir de 50 à 400N avec un pas de 25N.

Dimensions in mm - We reserve the right to take modifications

F1 100N - 800N

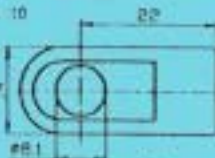


Thickness 5
Dick
Epaisseur



B6

Thickness 10
Dick
Epaisseur

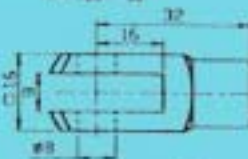


B119

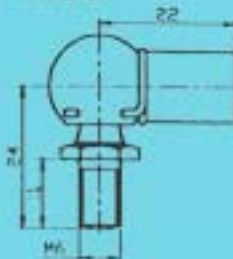
Thickness 10
Dick
Epaisseur



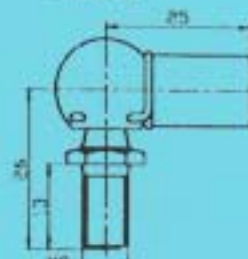
B85



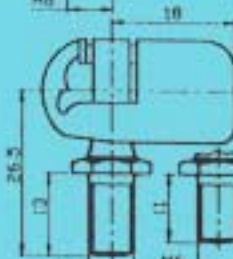
B7



B22



B9



B48

B47

PROTECTION TUBE
SCHUTZROHR
TUBE DE PROTECTION

K

SAFETY TUBE
ARRETIERROHR
TUBE D'ARRÊT

EK

STANDART

A	B	F1(N)	Ref. No.
20	103	*	100100
40	143	*	101100
50	163	*	102100
60	183	*	103100
80	223	*	104100
100	263	*	105100
120	303	*	106100
140	343	*	107100
150	363	*	108100
160	383	*	109100
180	423	*	110100
200	463	*	111100
220	503	*	112100
250	563	*	113100
300	668	<400	114100
350	768	<400	115100
400	868	<300	116100

Special length on request
Maßvarianten auf Anfrage
Longueur spéciale sur demande

Other fittings on request
Anschlußvarianten auf Anfrage
D'autres attache sur demande

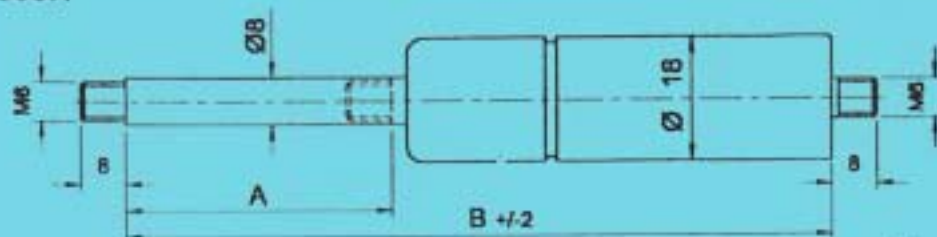
ORDERING EXAMPLE / BESTELL BEISPIEL / EXEMPLE DE COMMANDE

100100 / 0300N / B6 / K
Ref. No. F1 Piston rod end fitting Protection tube
Kolbenstangen Anschluss Schutzrohr
Attache côté tige Tube de protection

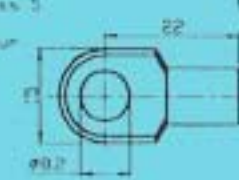
* F1 Values from 100 - 800N in steps of 25N. / F1 Werte von 100 - 800N gestuft in 25N schritten. / Valeurs F1 à choisir de 100 à 800N avec un pas de 25N.

Dimensions in mm - We reserve the right to take modifications

F1 100N - 800N

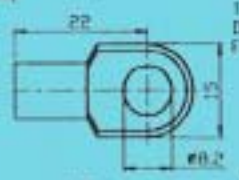


Thickness 5
Dick
Épaisseur



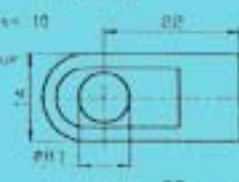
B6

Thickness 5
Dick
Épaisseur



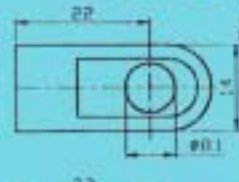
B6

Thickness 10
Dick
Épaisseur



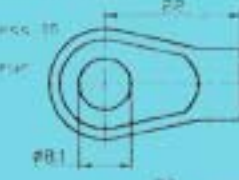
B119

Thickness 10
Dick
Épaisseur



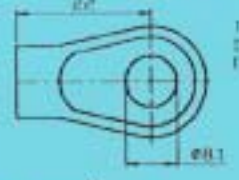
B119

Thickness 10
Dick
Épaisseur

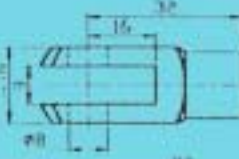


B85

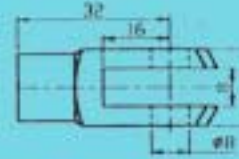
Thickness 10
Dick
Épaisseur



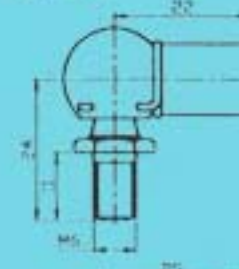
B85



B7



B7

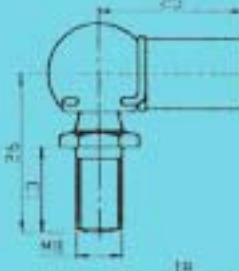


B22

B17A103



B18



B9

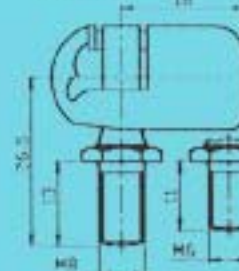
PROTECTION TUBE
SCHUTZROHR
TUBE DE PROTECTION **K**

SAFETY TUBE
ARRETIERROHR
TUBE D'ARRÊT **EK**

STANDART			
A	B	F1(N)	Ref. No.
20	90	*	100300
40	130	*	101300
50	150	*	102300
60	170	*	103300
80	210	*	104300
100	250	*	105300
120	290	*	106300
140	330	*	107300
150	350	*	108300
160	370	*	109300
180	410	*	110300
200	450	*	111300
220	490	*	112300
250	550	*	113300
300	655	<400	114300
350	755	<400	115300
400	855	<300	116300

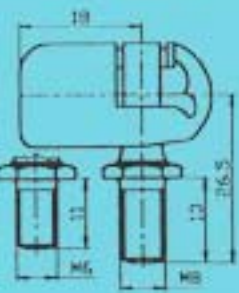
Special length on request
Maßvarianten auf Anfrage
Longueur spéciale sur demande

Other fittings on request
Anschlußvarianten auf Anfrage
D'autres attache sur demande



B48

B48



B47

ORDERING EXAMPLE / BESTELL BEISPIEL / EXEMPLE DE COMMANDE

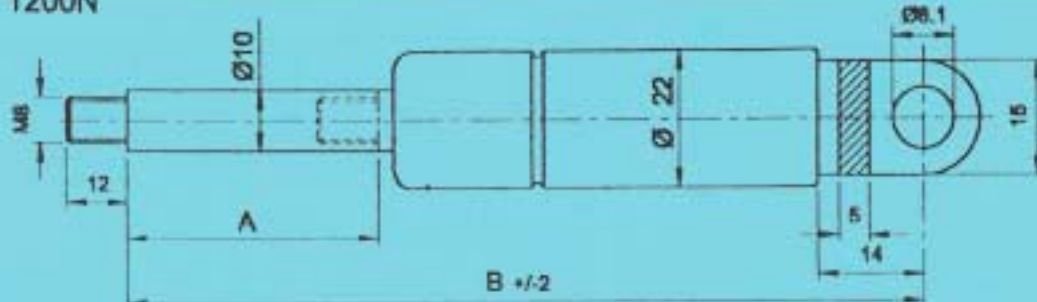
100300 / 0300N / B48 / B48 / K

Ref. No. F1 Piston rod and fitting Tube and fitting Protection tube
Kolbenstangen Anschluß Druckrohr Anschluß Schutzrohr
Attache côté tige Attache côté tube Tube de protection

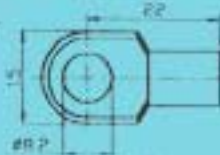
* F1 Values from 100 - 800N in steps of 25N / F1 Werte von 100 - 800N gestuft in 25N schritten / Valeurs F1 à choisir de 100 à 800N avec un pas de 25N.

Dimensions in mm - We reserve the right to take modifications

F1 100N - 1200N

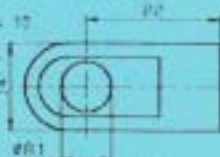


Thickness 5
Dek
Epaisseur



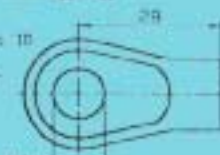
B2

Thickness 10
Dek
Epaisseur



B121

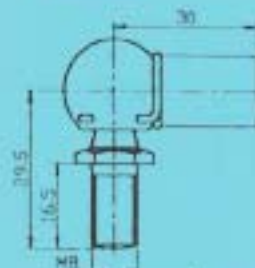
Thickness 10
Dek
Epaisseur



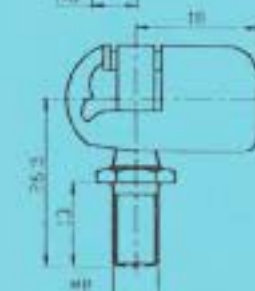
B90



B3



B5



B50

PROTECTION TUBE
SCHUTZROHR
TUBE DE PROTECTION **K**

SAFETY TUBE
ARRETIERROHR
TUBE D'ARRÊT **EK**

STANDART			
A	B	F1(N)	Ref. No.
50	163	•	200100
60	183	•	200101
80	223	•	200102
100	263	•	201115
120	303	•	201100
150	363	•	202115
180	423	•	202100
200	463	•	203115
250	563	•	204115
300	663	<1000	205115
350	763	<1000	206115
400	863	< 900	207115
500	1070	< 800	208100

A: 20 min - 800 max
Special length on request
Maßvarianten auf Anfrage
Longueur spéciale sur demande

Other fittings on request
Anschlußvarianten auf Anfrage
D'autres attache sur demande

ORDERING EXAMPLE / BESTELL BEISPIEL / EXEMPLE DE COMMANDE

201115 / 0300N / B5 / K

Ref. No.

F1

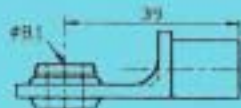
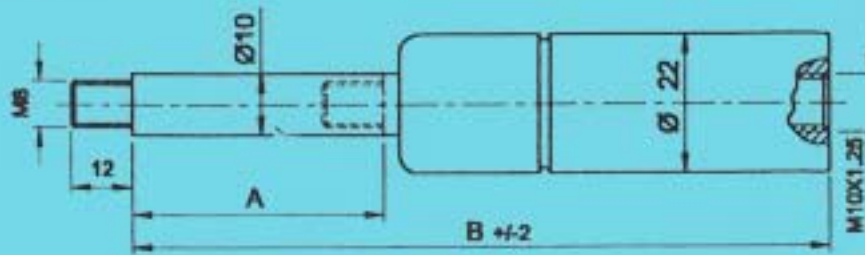
Piston rod and fitting
Kolbenstangen Anschluß
Attache côté tige

Protection tube
Schutzrohr
Tube de protection

* F1 Values from 100 - 1200N in steps of 50N / F1 Werte von 100 - 1200N gesteuert in 50N schritten. / Valeurs F1 à choisir de 100 à 1200N avec un pas de 50N.

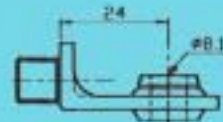
Dimensions in mm - We reserve the right to take modifications

F1 100N - 1200N



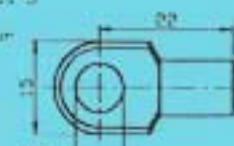
B1

PROTECTION TUBE
SCHUTZROHR
TUBE DE PROTECTION **K**



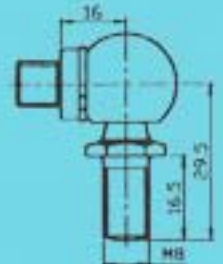
M6

Thickness 5
Dicke
Ephästür

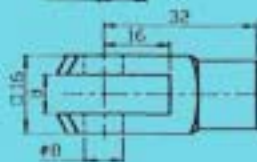


B2

SAFETY TUBE
ARRETIERROHR
TUBE D'ARRÊT **EK**



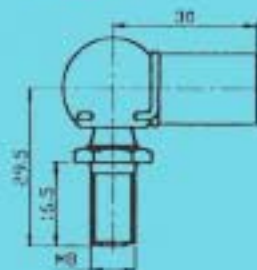
M8



B3

STANDART

A	B	F1(N)	Ref. No.
50	154	*	200200
60	174	*	200201
80	214	*	200202
100	254	*	201215
120	294	*	201200
150	354	*	202215
180	414	*	202200
200	454	*	203215
250	554	*	204215
300	655	<1000	205215
350	755	<1000	206215
400	860	< 900	207215
500	1060	< 800	208200



B5

A: 20 min - 800 max
Special length on request
Maßvarianten auf Anfrage
Longueur spéciale sur demande

Other fittings on request
Anschlußvarianten auf Anfrage
D'autres attache sur demande

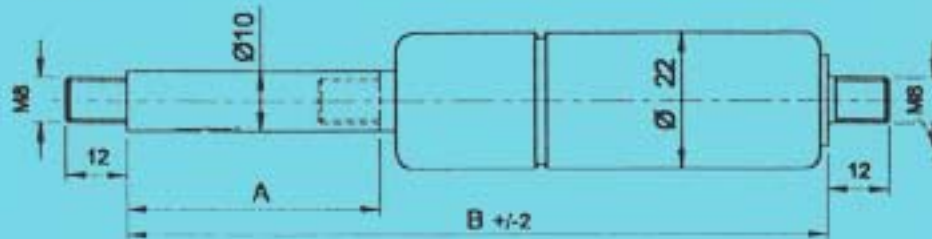
ORDERING EXAMPLE / BESTELL BEISPIEL / EXEMPLE DE COMMANDE

201215 / 0300N / B5 / M8 / K
 Ref. No. F1 Piston rod end fitting Tube end fitting Protection tube
 Kolbenstangen Anschluß Druckrohr Anschluß Schutzrohr
 Attache côté tige Attache côté tube Tube de protection

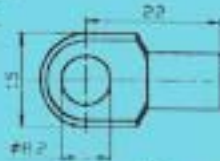
* F1 Values from 100 - 1200N in steps of 50N. / F1 Werte von 100 - 1200N gestaffelt in 50N schritten. / Valeurs F1 à choisir de 100 à 1200N avec un pas de 50N.

Dimensions in mm - We reserve the right to take modifications

F1 100N - 1200N



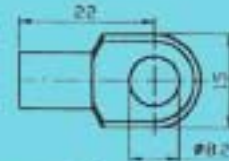
Thickness 5
Dick
Epaisseur



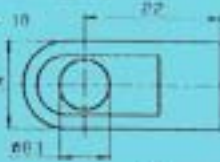
B2

Thickness 5
Dick
Epaisseur

B2



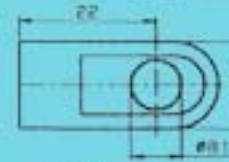
Thickness 10
Dick
Epaisseur



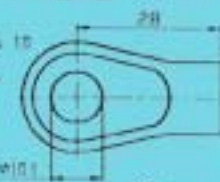
B121

Thickness 10
Dick
Epaisseur

B121



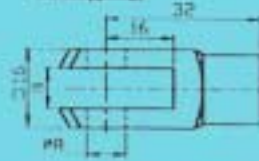
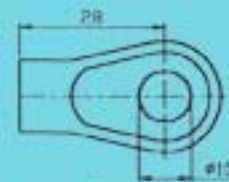
Thickness 10
Dick
Epaisseur



B90

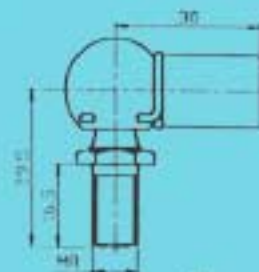
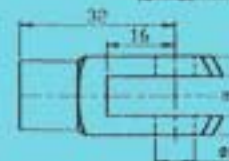
Thickness 10
Dick
Epaisseur

B90



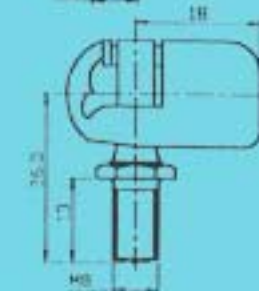
B3

B3



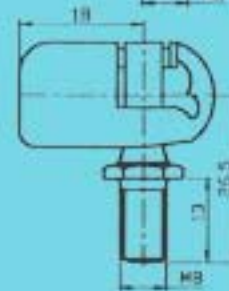
B5

B5



B50

B50



PROTECTION TUBE	K
SCHUTZROHR	
TUBE DE PROTECTION	
SAFETY TUBE	EK
ARRETIERROHR	
TUBE D'ARRÊT	

STANDART			
A	B	F1(N)	Ref. No.
50	154	*	200300
60	174	*	200301
80	214	*	200302
100	254	*	201315
120	294	*	201300
150	354	*	202315
180	414	*	202300
200	454	*	203315
250	554	*	204315
300	655	<1000	205315
350	755	<1000	206315
400	860	< 900	207315
500	1060	< 800	208300

A: 20 min - 800 max
Special length on request
Maßvarianten auf Anfrage
Longueur spéciale sur demande

Other fittings on request
Anschlußvarianten auf Anfrage
D'autres attache sur demande

ORDERING EXAMPLE / BESTELL BEISPIEL / EXEMPLE DE COMMANDE

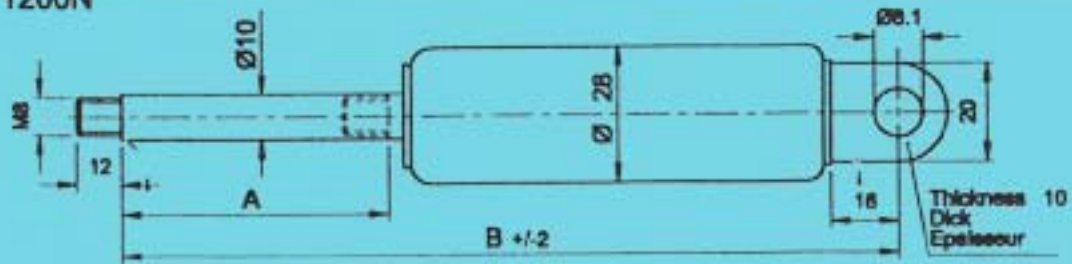
201315 / 0300N / B5 / B5 / EK

Ref. No.	F1	Piston rod end fitting	Tube end fitting	Safety tube
		Kolbenstangen Anschluß	Druckrohr Anschluß	Arreßerrohr
		Attache côté tige	Attache côté tube	Tube d'arrêt

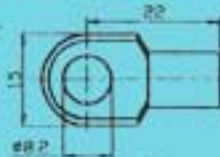
* F1 Values from 100 - 1200N in steps of 50N. / F1 Werte von 100 - 1200N gestuft in 50N schritten. / Valeurs F1 à choix de 100 à 1200N avec un pas de 50N.

Dimensions in mm - We reserve the right to take modifications.

F1 150N - 1200N



Thickness 5
Dick
Epaissieur

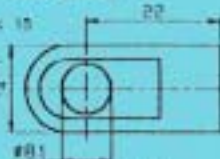


B2

PROTECTION TUBE
SCHUTZROHR
TUBE DE PROTECTION

K

Thickness 15
Dick
Epaissieur

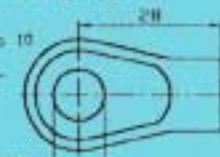


B121

SAFETY TUBE
ARRETIERROHR
TUBE D'ARRÊT

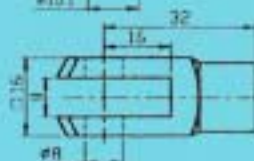
EK

Thickness 10
Dick
Epaissieur



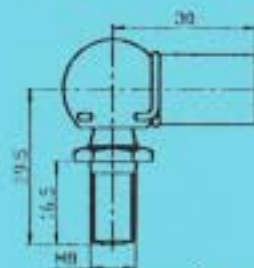
B90

STANDART			
A	B	F1(N)	Ref. No
50	176	*	300100
100	276	*	301115
150	376	*	302115
200	476	*	303115
250	576	*	304115
300	680	<1000	305115
350	780	<1000	306115
400	880	< 900	307115
500	1080	< 800	308100



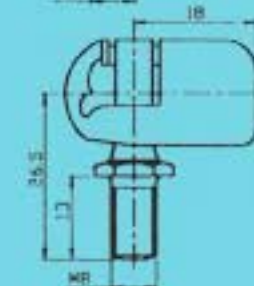
B3

A: 20 min – 800 max
Special length on request
Maßvarianten auf Anfrage
Longueur spéciale sur demande



B5

Other fittings on request
Anschlußvarianten auf Anfrage
D'autres attache sur demande



B50

ORDERING EXAMPLE / BESTELL BEISPIEL / EXEMPLE DE COMMANDE

301115 / 0300N / B5 / K

Ref. No.

F1

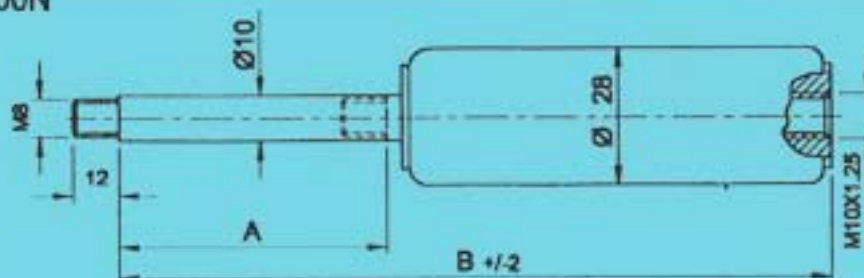
Piston rod and fitting
Kolbenstangen Anschluß
Attache côté tige

Protection tube
Schutzrohr
Tube de protection

* F1 Values from 150 - 1200N in steps of 50N. / F1 Werte von 150 - 1200N gestaffelt in 50N schritten. / Valeurs F1 à choisir de 150 à 1200N avec un pas de 50N.

Dimensions in mm - We reserve the right to take modifications

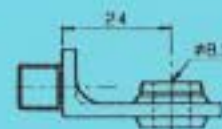
F1 150N - 1200N



B1

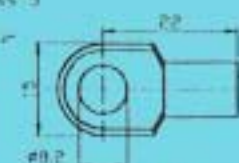
PROTECTION TUBE
SCHUTZROHR
TUBE DE PROTECTION

K



M6

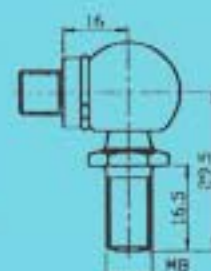
Thickness 5
Dick
Epaisseur



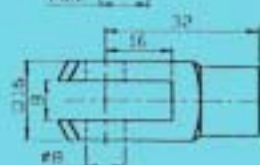
B2

SAFETY TUBE
ARRETIERROHR
TUBE D'ARRÊT

EK

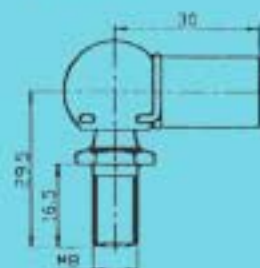


M8



B3

STANDART			
A	B	F1(N)	Ref. No.
50	160	*	300200
100	260	*	301215
150	360	*	302215
200	460	*	303215
250	560	*	304215
300	665	<1000	305215
350	765	<1000	306215
400	865	< 900	307215
500	1065	< 800	308200



B5

A: 20 min - 800 max
Special length on request
Maßvarianten auf Anfrage
Longueur spéciale sur demande

Other fittings on request
Anschlußvarianten auf Anfrage
D'autres attache sur demande

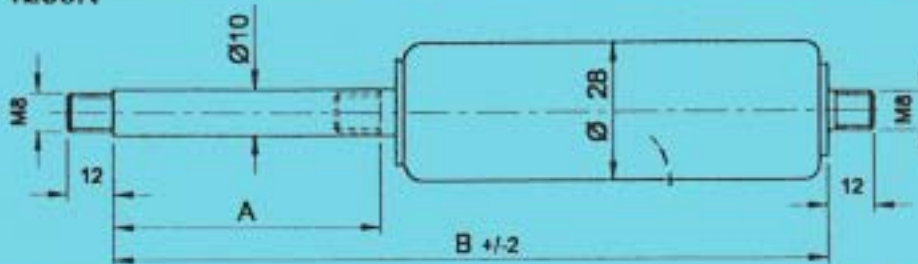
ORDERING EXAMPLE / BESTELL BEISPIEL / EXEMPLE DE COMMANDE

301215 / 0300N / B5 / M8 / K
 Ref. No. F1 Piston rod and fitting Tube and fitting Protection tube
 Kolbenstangen Anschluss Druckrohr Anschluss Schutzrohr
 Attache côté tige Attache côté tube Tube de protection

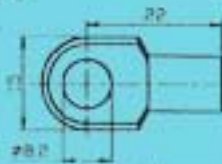
* F1 Values from 150 - 1200N in steps of 50N. / F1 Werte von 150 - 1200N gestuft in 50N schritten. / Valeurs F1 à choisir de 150 à 1200N avec un pas de 50N.

Dimensions in mm - We reserve the right to take modifications

F1 150N - 1200N

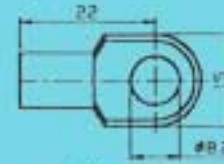


Thickness 3
Dick
Epaisseur



B2

Thickness 5
Dick
Epaisseur



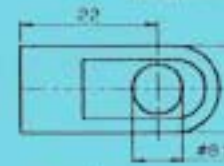
B2

Thickness 10
Dick
Epaisseur



B121

Thickness 10
Dick
Epaisseur



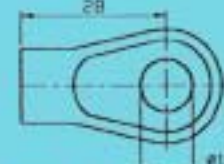
B121

Thickness 10
Dick
Epaisseur

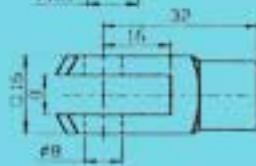


B90

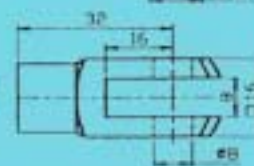
Thickness 10
Dick
Epaisseur



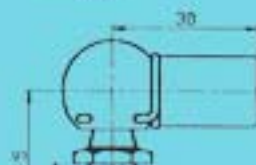
B90



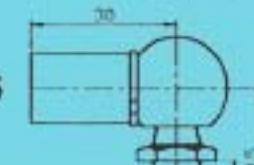
B3



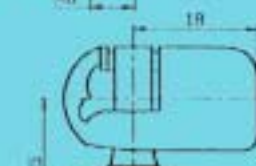
B3



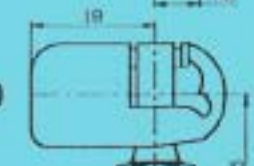
B5



B5



B50



B50

PROTECTION TUBE	K
SCHUTZROHR	
TUBE DE PROTECTION	
SAFETY TUBE	EK
ARRETIERROHR	
TUBE D'ARRÊT	

STANDART			
A	B	F1(N)	Ref. No.
50	160	*	300300
100	260	*	301315
150	360	*	302315
200	460	*	303315
250	560	*	304315
300	665	< 1000	305315
350	765	< 1000	306315
400	865	< 900	307315
500	1065	< 800	308300

A: 20 min - 800 max
Special length on request
Maßvarianten auf Anfrage
Longueur spéciale sur demande

Other fittings on request
Anschlußvarianten auf Anfrage
D'autres attache sur demande

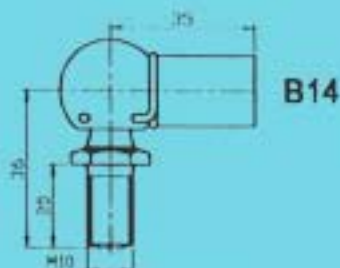
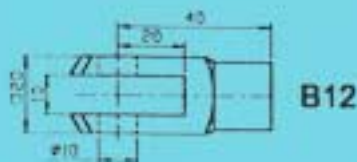
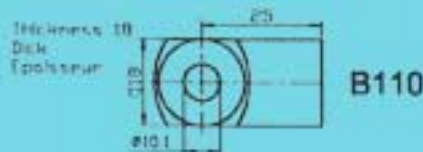
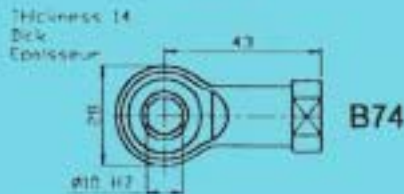
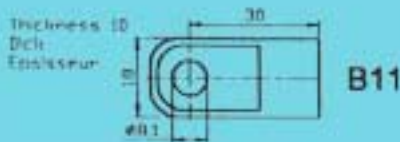
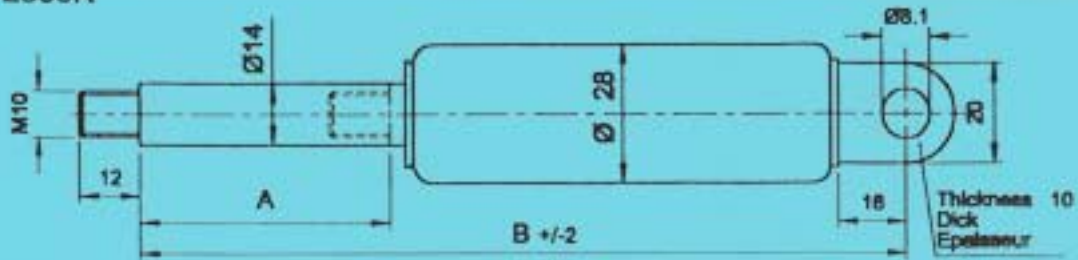
ORDERING EXAMPLE / BESTELL BEISPIEL / EXEMPLE DE COMMANDE

301315 / 0300N /	B5	/	B5	/	EK
Ref. No.	F1	Piston rod end fitting Kolbenstangen Anschluß Attache côté tige	Tube and fitting Druckrohr Anschluß Attache côté tube		Safety tube Arrelierohr Tube d'arrêt

* F1 Values from 150 - 1200N in steps of 50N. / F1 Werte von 150 - 1200N gestaffelt in 50N schritten. / Valeurs F1 à choisir de 150 à 1200N avec un pas de 50N.

Dimensions in mm - We reserve the right to take modifications

F1 250N - 2500N



PROTECTION TUBE
SCHUTZROHR
TUBE DE PROTECTION

K

SAFETY TUBE
ARRETIERROHR
TUBE D'ARRÊT

EK

STANDART

A	B	F1(N)	Ref. No.
50	176	*	140100
100	276	*	141100
150	376	*	142100
200	476	*	143100
250	576	*	144100
300	676	*	145100
350	776	*	146100
400	876	*	147100
450	976	<2000	148100
500	1075	<2000	149100
600	1325	<1800	149110
700	1525	<1600	149120
800	1725	<1500	149130

Special length on request
Maßvarianten auf Anfrage
Longueur spéciale sur demande

Other fittings on request
Anschlußvarianten auf Anfrage
D'autres attache sur demande

Release valve possible
Mit Ventil im Druckrohrendstück möglich
Libérez la valve possible

ORDERING EXAMPLE / BESTELL BEISPIEL / EXEMPLE DE COMMANDE

140100 / 0300N / B11 / K

Ref. No.

F1

Piston rod end fitting

Protection tube

Kolbenstangen Anschluss

Schutzrohr

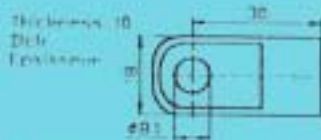
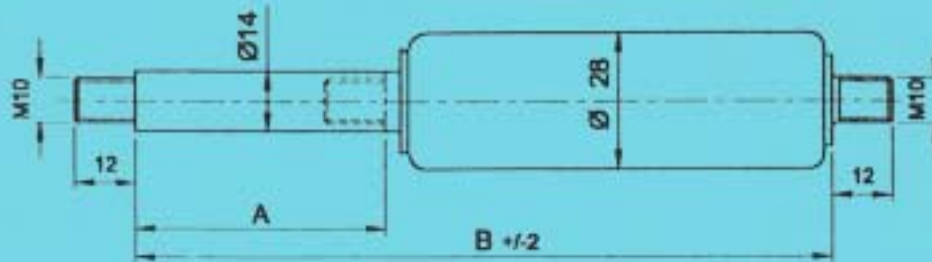
Attache côté tige

Tube de protection

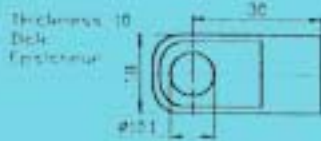
*F1 Values from 250 - 2500N in steps of 100N. / F1 Werte von 250 - 2500N gestaffelt in 100N schritten. / Valeurs F1 à choisir de 250 à 2500N avec un pas de 100N.

Dimensions in mm - We reserve the right to take modifications

F1 250N - 2500N



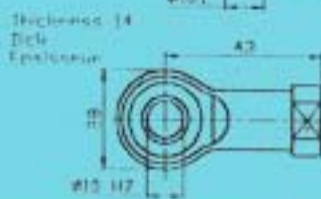
B11



B124



B145



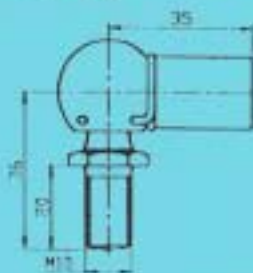
B74



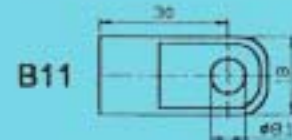
B110



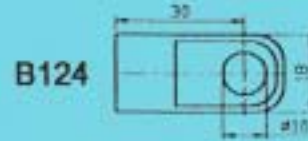
B12



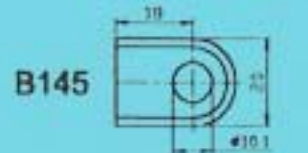
B14



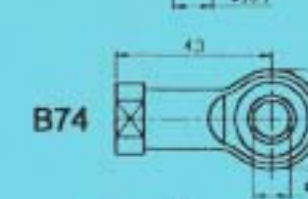
B11



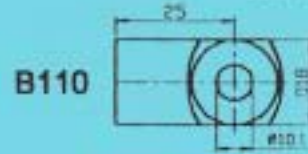
B124



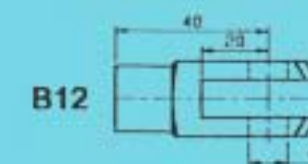
B145



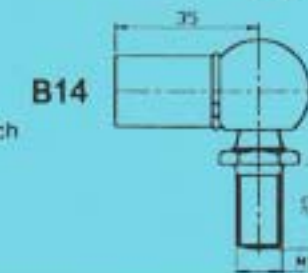
B74



B110



B12



B14

PROTECTION TUBE
SCHUTZROHR
TUBE DE PROTECTION

K

SAFETY TUBE
ARRETIERROHR
TUBE D'ARRÊT

EK

STANDART

A	B	F1(N)	Ref. No.
50	160	*	140300
100	260	*	141300
150	360	*	142300
200	460	*	143300
250	560	*	144300
300	660	*	145300
350	760	*	146300
400	860	*	147300
450	960	<2000	148300
500	1060	<2000	149300
600	1310	<1800	149310
700	1510	<1600	149320
800	1710	<1500	149330

Special length on request
Maßvarianten auf Anfrage
Longueur spéciale sur demande

Other fittings on request
Anschlußvarianten auf Anfrage
D'autres attache sur demande

Release valve possible
Mit Ventil im Druckrohrendstück möglich
Libérez la valve possible

ORDERING EXAMPLE / BESTELL BEISPIEL / EXEMPLE DE COMMANDE

140300 / 0300N / B14 / B14 / EK

Ref. No.

F1

Piston rod end fitting
Kolbenstangen Anschluß
Attache côté tige

Tube end fitting
Druckrohr Anschluß
Attache côté tube

Safety tube
Arresterrohr
Tube d'arrêt

F1 Values from 250 - 2500N in steps of 100N. / F1 Werte von 250 - 2500N gestuftet in 100N schritten. / Valeurs F1 à choisir de 250 à 2500N avec un pas de 100N.

Dimensions in mm - We reserve the right to take modifications